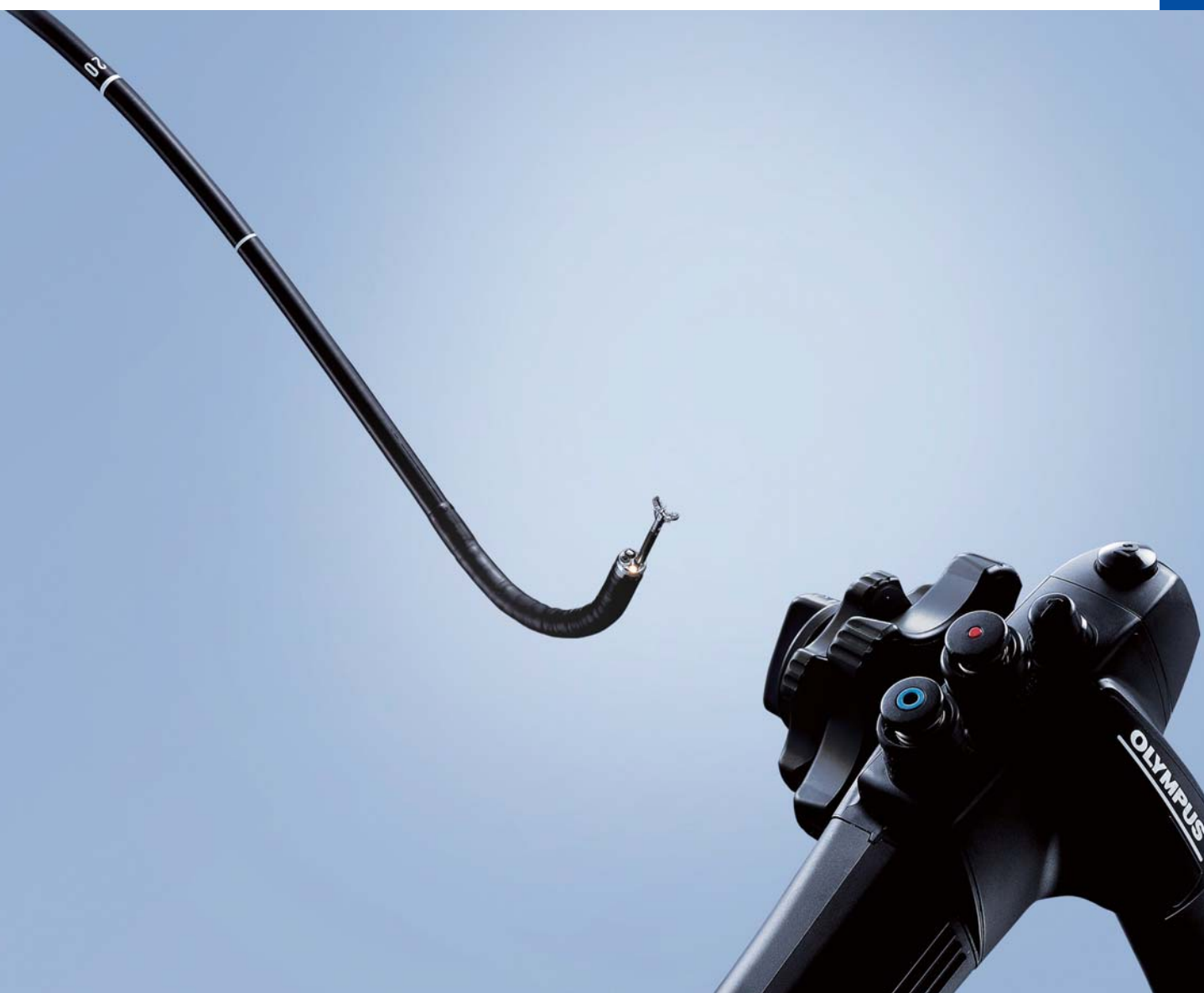


GASTROINTESTINAL VIDEOSCOPE

GIF-XP150N

Slim 5.5 mm-diameter Scope Makes Possible Both Transoral and Transnasal Insertion for Easier Examinations and Enhanced Patient Comfort

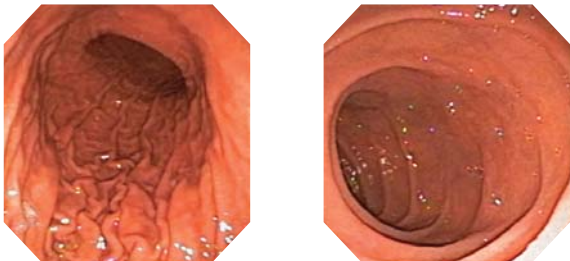


GASTROINTESTINAL VIDEOSCOPE

OLYMPUS GIF TYPE XP150N

Main Features

- Slim design measuring 5.5 mm in diameter at both the distal end and insertion tube minimizes patient discomfort by enabling transnasal insertion in addition to transoral insertion.
- Excellent image quality ensures optimal observation.
- Ergonomically designed grip to enhance the scope maneuverability while easy-to-access hand controls and user-programmable switches improve operability.

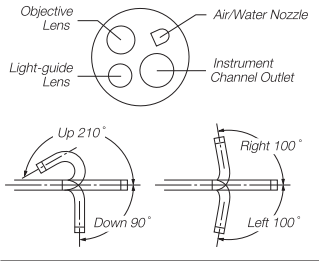


- Four-way angulation (210° up, 90° down, 100° right/left) improves operation and accessibility to the lesion.
- Narrow on the outside but wide on the inside — a 2.0 mm diameter channel is provided.



Specifications

Optical System	Field of view	120°
	Direction of view	Forward viewing
	Depth of field	3 ~ 100 mm
Distal End	Outer diameter	5.5 mm
Insertion Tube	Outer diameter	5.5 mm
Bending Section	Angulation range	Up 210°, Down 90°, Right 100°, Left 100°
Working Length		1100 mm
Total Length		1420 mm
Instrument Channel	Inner diameter	2.0 mm
	Minimum visible distance	3 mm from distal end
	Endotherapy accessory entrance/exit position in field of view	



Specifications, design and accessories are subject to change without any notice or obligation on the part of the manufacturer.



OLYMPUS MEDICAL SYSTEMS CORP.
Shinjuku Monolith, 2-3-1 Nishi-Shinjuku, Shinjuku-ku, Tokyo 163-0914, Japan

For a complete listing of
sales and distribution locations visit:
www.olympus.com