

Specifications of L-0980A

●MAIN MICROSCOPE

Model:	L-0980A
Magnification changes:	Ratio 1:6(from 5X to 30X)
Objective lens:	F=175mm
Eyepiece:	12.5X wide field
	Adjusting range of visibility diopter-below -6D to +5D or more.

Total Magnification and Field of view:

Objective lens:	F=175mm
Total Magnification:	5X to 30X
Field of view(mm):	49mm to 9mm ϕ
Brightness(max):	80,000Lux(ϕ 6)
Coaxial illumination field(mm):	40mm ϕ

Filter:	Built-in heat absorbing filter, Cobalt filter, 50% ND filter
---------	---

Light Source:	Halogen lamp(15V, 150W) with cold mirror filter equipped..
---------------	---

Range of pupillary distance:	50 -75mm
------------------------------	----------

X-Y Translator:	Range \pm 22.5
-----------------	------------------

●VERTICAL FINE CONTROL

Model:	Electric type, using a motor
--------	------------------------------

Adjustment of focus:	40mm
----------------------	------

Focusing speed:	1.3mm/sec.
-----------------	------------

Microscope inclination:	0° to 30°
-------------------------	-----------

●FOOT SWITCH

Model:	Floor placement type, stepping type
--------	-------------------------------------

Weight:	4kg
---------	-----



Certificate:
09 105 89060

Inami & Co.,Ltd.

L-0980A

OPERATION MICROSCOPE TERA

ZOOM OPERATION MICROSCOPE L-0980A



L-0980M
MANUAL ZOOM OPERATION MICROSCOPE
GIGA



Certificate:
09 105 89060



●Specifications subject to change without prior notice.



Inami & Co.,Ltd.

BIJYOGI RESEARCH INSTITUTE

No. 3-14-13, Bijyogi, Toda-City,
Saitama-Pref, 335-0031, Japan
Tel. 81-48-422-0173 Fax. 81-48-421-3838
Website :<http://www.inami.co.jp>
E-Mail : ibri@inami.co.jp

®TRADE MARK OF INAMI & CO., LTD.

HEAD OFFICE

No. 24-2, Hongo 3-Chome,
Bunkyo-ku, Tokyo 113-0033, Japan
Tel. 81-3-3814-5916 Fax. 81-3-5684-2126
Website :<http://www.inami.co.jp>
E-Mail : corpinfo@inami.co.jp

®TRADE MARK OF INAMI & CO., LTD.

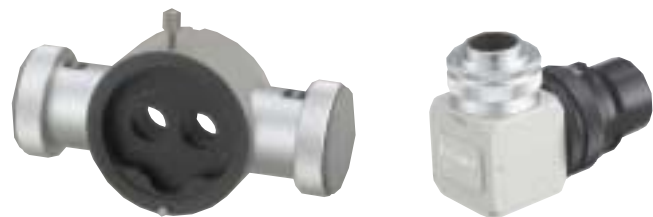


X-Y TRANSLATOR WITH RE-CENTERING



ONE TOUCH BULB CHANGING SYSTEM

Our new one touch bulb replacement system permits the change of the bulbs without any inconvenience by sliding the fiber cable port to the other side easily.



OPTIONAL ACCESSORIES

This is designed to be mounted with any kinds of accessory, especially L-0568 Inamil CCD Camera device with L-0541 Beam splitter and L-0544 TV Camera adaptor



FULL-FUNCTION FOOT SWITCH

Special designed Full-function footswitch allows the surgeon without hands over almost all functions, zoom magnifications, X-Y translator device, illumination switch etc.



**L-0980A
AUTOMATIC ZOOM OPERATION
MICROSCOPE WITH X-Y DEVICE
TERA**

2 STEPS VOLTAGE SELECTOR:

We have developed a new voltage selector system with 2 steps selector, so this will be available for unstable voltages.

- 100V - 120V AC
- 200V - 240V AC

